

QUINGUARD®

Enclosure series SPZ ready to start



SPZ Enclosure series

Patented and ATEX certified enclosure series ready to start

Overpressure



Following specifications characterized the SPZ housing series:

Material:

- Painted steel sheet
- Stainless steel V2A, 1.4301, 304L
- Stainless steel V4A, 1.4404, 306L
- Stainless steel V2A, 1.4571, 306Ti

Construction:

- Fully welded construction frame
- Ongoing to frames in the body and lid

Body:

- Hinged on the right side (left and right at SPZ-_07 and SPZ-_08)
- Crotch fixed welded at SPZ-_07 and SPZ-_08
- Doors with reinforcement frame
- Mounting plate on the backside for customer
- Mountingplate QMP right hand side with QUINGUARD® controller
- Mountingplate DMP right hand side with QUINGUARD® controller

Door closure :

- Double mandrel 3 mm

Standard cabinets with short delivery time (dimension in W * H * D in mm). The capacity refers the maximum power dissipation which is shown on the documentation.

• SPZ-_01	400*	600*	300mm	145 Watt
• SPZ-_02	600*	600*	300mm	190 Watt
• SPZ-_03	600*	800*	300mm	235 Watt
• SPZ-_04	800*	1000*	300mm	347 Watt
• SPZ-_05	800*	1200*	400mm	456 Watt
• SPZ-_06	800*	1500*	400mm	545 Watt
• SPZ-_07	800*	1800*	400mm	634 Watt
• SPZ-_08	1000*	2000*	500mm	898 Watt
• SPZ-_09	1200*	2000*	500mm	1028 Watt

The pressure controller QUINGUARD® inside the standard enclosure series SPZ is ready wired with the stationary gas detector on terminals. Fixed pressure reducer automatically regulates the setting form. Due to the low internal pressure 6 mbar installing approved devices in the front is not a problem.

SPZ Enclosure series

Patented and ATEX certified enclosure series ready to start



Overpressure



- No flushing necessary
- Certified Ex e enclosure
- Different power dissipation
- Easy operation without programming
- Mounting is done on customer side
- Option with Safety glass or HMI

Description:

QUINTEX offers the enclosure series SPZ in different sizes and designs. All systems are available for the use in hazardous area (Zone 1/21 and Zone 2/22) in the protection type overpressure. Variants can vary depending on the specific application. The enclosure series SPZ allowed the customer to bring his non ex-components directly in the hazardous area. The enclosures are certified and ready to use immediately after installation. By sending the documentation especially wiring diagram, drawing, bill of material and photos the type of label will arrive quickly after examination the documents. By connecting the power supply and the necessary pressure, both find in the accompanying documentation, the system starts automatically. The QUINGUARD® control unit works without a flushing phase and starts after free measurement with the stationary gas detector automatically. The elimination of

flushing time and the use of flushing gas make's the operation particularly economical. Each cabinet has different power dissipation that can be used inside. Please look in the documentation or on the type label what is maximum allowed.



Possible Application

- Enclosure with HMI's
- Enclosure in all different sizes
- Analyzer
- Fill-up system
- Dosing system
- Painting system
- Temperature control units

Technical Data:

Dimension (mm):	see datasheet
IP rate:	IP 66
Ambient temperature:	-25°C up to +70°C
Switching capacity:	max. 5 A (without contactor SC)

Certificates

ATEX, GOST TC-RU

Marking

Pressure controller QUINGUARD® in the SPZ enclosure series:
Ex II 2G / II D

Power supply:

DC 24 Volt
AC 115 Volt 50/60 Hz
AC 230 Volt 50/60 Hz

Options:

- Certified control functions
- Certified contactor series SC
- Variable enclosure dimension

SPZ Enclosure series

Patented and ATEX certified enclosure ready to start



Überdruckkapselung



Specification for Ex areas			
Marking in accordance to 94/9/EG		ATEX	
Type of protection		II 2G Ex IIC und II 2D Ex IIIC	
Ambient temperature °C Silicon sealing		Gas Temperature class T*°C	Dust temperature °C
MIN	MAX		
-25	+70	T4	130
Max. Temperature range	-25..+70°C		
Ingress protection	IP 66 nach EN60529		
Ex-Zone		1, 2, 21, 22	
Applicable at risk of mechanical exposure (Impact resistance)		high (7 Joule)	
Gas groups		IIA; IIB; IIC	
Certificates		ATEX, GOST TC-RU	

Enclosure specification	
Enclosure material	Sheet steel painted, Stainless Steel 304 , Stainless Steel 316L, Plastic (e.g.GRP)
Surface	Painted in RAL 7035, brushed, electro polished Mounting plate sheet steel, zinc plated
Lid fixing	Quarter turn with 3mm double bit/ Door hinged right hand
Gasket	One piece of silicone or PU
Earthing	8mm Earthing bolt inside/outside
Bushing	Cable glands made of plastic or metal zinc plated
Mounting	Wall mounting brackets screwed or welded

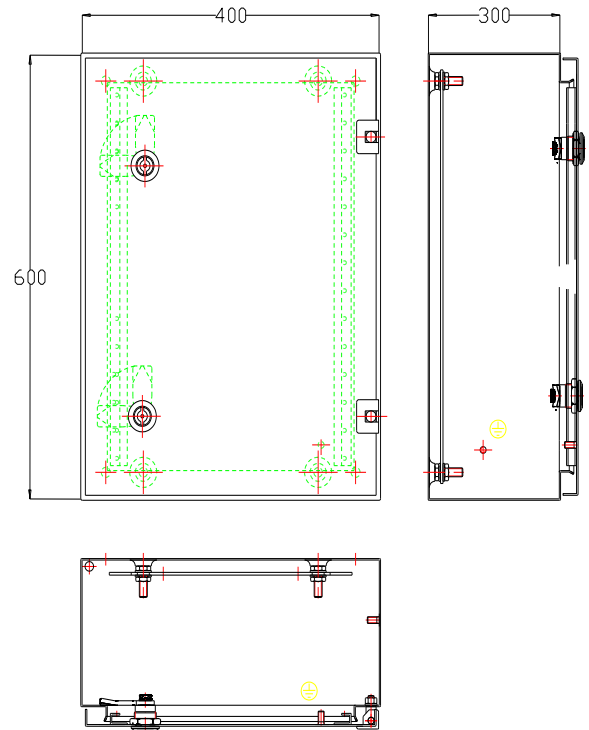
Optionen	
Door closure	Square 8mm; Triangular lock with cylinder
Safety glass window	Made from ESG; Size on request
Foils in the door	Fixed with clamp frame for mounting of operator terminals
Double gasket	Will be used under high pressure



- No flushing necessary
- Certified Ex e enclosure
- Different power dissipation
- Easy operation without programming
- Mounting is done on customer side
- Option with Safety glass or HMI

Description:

QUINTEX offers the enclosure series SPZ in different sizes and designs. All systems are available for the use in hazardous area (Zone 1/21 and Zone 2/22) in the protection type overpressure. The enclosure series SPZ allowed the customer to bring his non ex-components directly in the hazardous area. The enclosures are certified and ready to use immediately after installation. By connecting the power supply and the necessary pressure, both find in the accompanying documentation, the system starts automatically. The elimination of flushing time and the use of flushing gas make's the operation particularly economical. The QUINGUARD® control unit works without a flushing phase and starts after free measurement with the stationary gas detector in zone 1 automatically. In zone 2 applications it measure free by handheld gas detector and give an alarm when the pressure felt under the level.



Possible Application

- Enclosure with HMI's
- Analyzer
- Fill-up system
- Dosing system
- Painting system
- Temperature control units

Technical Data:

Dimension (mm): 400*600*300mm
IP rate: IP 66
Power dissipation: 145 Watt
Switching capacity: max. 5 A (without Contactor SC)

Certificates

ATEX, GOST TC-RU

Marking

Pressure controller QUINGUARD® in the SPZ enclosure series:

Ex II 2G / II D

Power supply:

DC 24 Volts
AC 115 Volts 50/60 Hz
AC 230 Volts 50/60 Hz

Order number:

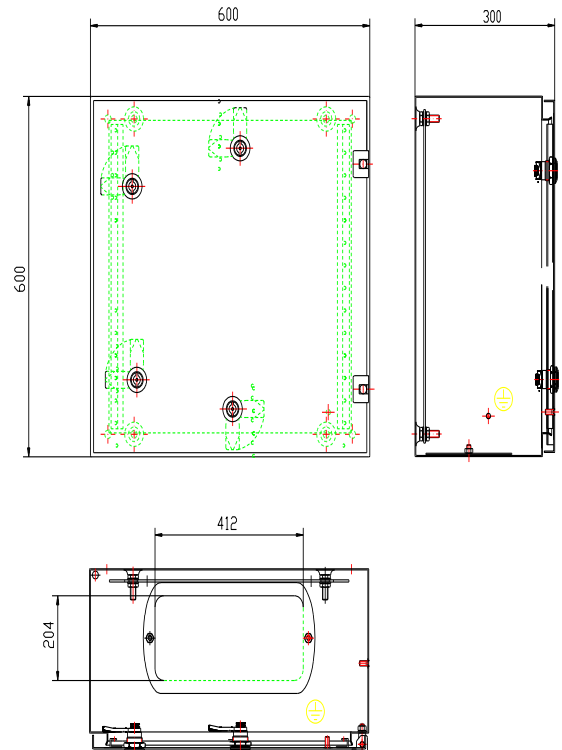
Mild steel painted RAL 7035	SPZ -S01
Stainless Steel 1.4301, 304L	SPZ -V01
Stainless Steel 1.4401, 316L	SPZ -W01



- No flushing necessary
- Certified Ex e enclosure
- Different power dissipation
- Easy operation without programming
- Mounting is done on customer side
- Option with Safety glass or HMI

Description:

QUINTEX offers the enclosure series SPZ in different sizes and designs. All systems are available for the use in hazardous area (Zone 1/21 and Zone 2/22) in the protection type overpressure. The enclosure series SPZ allowed the customer to bring his non ex-components directly in the hazardous area. The enclosures are certified and ready to use immediately after installation. By connecting the power supply and the necessary pressure, both find in the accompanying documentation, the system starts automatically. The elimination of flushing time and the use of flushing gas make's the operation particularly economical. The QUINGUARD® control unit works without a flushing phase and starts after free measurement with the stationary gas detector in zone 1 automatically. In zone 2 applications it measure free by handheld gas detector and give an alarm when the pressure felt under the level.



Possible Application

- Enclosure with HMI's
- Analyzer
- Fill-up system
- Dosing system
- Painting system
- Temperature control units

Technical Data:

Dimension (mm):	600*600*300mm
IP rate:	IP 66
Power dissipation:	190 Watt
Switching capacity:	max. 5 A (without Contactor SC)

Certificates

ATEX, GOST TC-RU

Marking

Pressure controller QUINGUARD® in the SPZ enclosure series:

Ex II 2G / II D

Power supply:

DC 24 Volts
AC 115 Volts 50/60 Hz
AC 230 Volts 50/60 Hz

Order number:

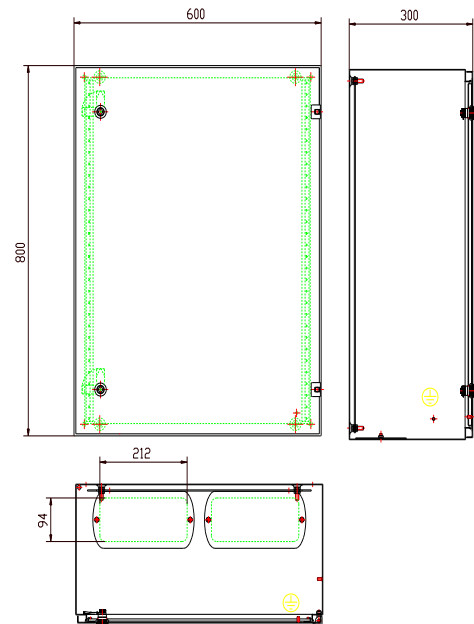
Mild steel painted RAL 7035	SPZ -S02
Stainless Steel 1.4301, 304L	SPZ -V02
Stainless Steel 1.4401, 316L	SPZ -W02



- No flushing necessary
- Certified Ex e enclosure
- Different power dissipation
- Easy operation without programming
- Mounting is done on customer side
- Option with Safety glass or HMI

Description:

QUINTEX offers the enclosure series SPZ in different sizes and designs. All systems are available for the use in hazardous area (Zone 1/21 and Zone 2/22) in the protection type overpressure. The enclosure series SPZ allowed the customer to bring his non ex-components directly in the hazardous area. The enclosures are certified and ready to use immediately after installation. By connecting the power supply and the necessary pressure, both find in the accompanying documentation, the system starts automatically. The elimination of flushing time and the use of flushing gas make's the operation particularly economical. The QUINGUARD® control unit works without a flushing phase and starts after free measurement with the stationary gas detector in zone 1 automatically. In zone 2 applications it measure free by handheld gas detector and give an alarm when the pressure felt under the level.



Possible Application

- Enclosure with HMI's
- Analyzer
- Fill-up system
- Dosing system
- Painting system
- Temperature control units

Technical Data:

Dimension (mm):	600*800*300mm
IP rate:	IP 66
Power dissipation:	235 Watt
Switching capacity:	max. 5 A (without Contactor SC)

Certificates

ATEX, GOST TC-RU

Marking

Pressure controller QUINGUARD® in the SPZ enclosure series:

Ex II 2G / II D

Power supply:

DC 24 Volts
 AC 115 Volts 50/60 Hz
 AC 230 Volts 50/60 Hz

Order number:

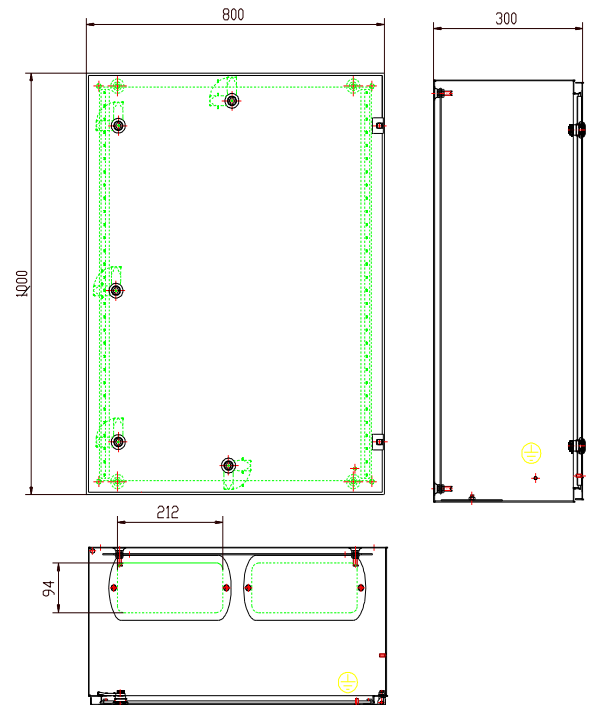
Mild steel painted RAL 7035	SPZ -S03
Stainless Steel 1.4301, 304L	SPZ -V03
Stainless Steel 1.4401, 316L	SPZ -W03



- No flushing necessary
- Certified Ex e enclosure
- Different power dissipation
- Easy operation without programming
- Mounting is done on customer side
- Option with Safety glass or HMI

Description:

QUINTEX offers the enclosure series SPZ in different sizes and designs. All systems are available for the use in hazardous area (Zone 1/21 and Zone 2/22) in the protection type overpressure. The enclosure series SPZ allowed the customer to bring his non ex-components directly in the hazardous area. The enclosures are certified and ready to use immediately after installation. By connecting the power supply and the necessary pressure, both find in the accompanying documentation, the system starts automatically. The elimination of flushing time and the use of flushing gas make's the operation particularly economical. The QUINGUARD® control unit works without a flushing phase and starts after free measurement with the stationary gas detector in zone 1 automatically. In zone 2 applications it measure free by handheld gas detector and give an alarm when the pressure felt under the level..



Possible Application

- Enclosure with HMI's
- Analyzer
- Fill-up system
- Dosing system
- Painting system
- Temperature control units

Technical Data:

Dimension (mm):	800*1000*300mm
IP rate:	IP 66
Power dissipation:	347 Watt
Switching capacity:	max. 5 A (without Contactor SC)

Certificates

ATEX, GOST TC-RU

Marking

Pressure controller QUINGUARD® in the SPZ enclosure series:

Ex II 2G / II D

Power supply:

DC 24 Volts
 AC 115 Volts 50/60 Hz
 AC 230 Volts 50/60 Hz

Order number:

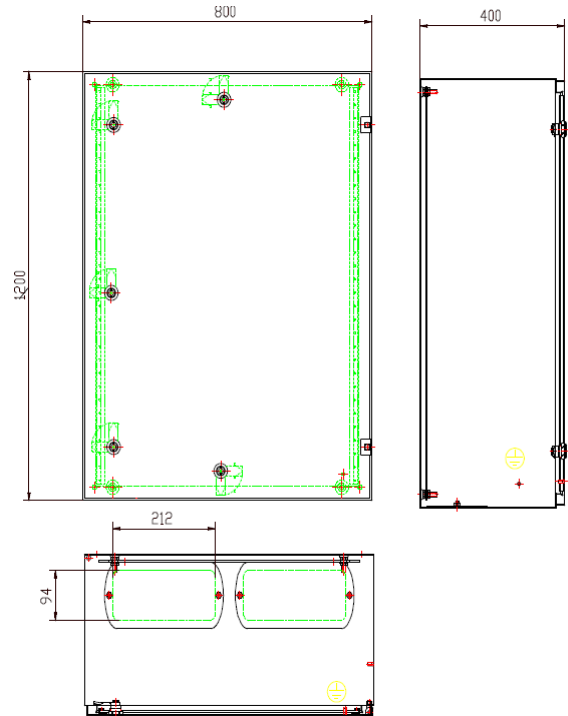
Mild steel painted RAL 7035	SPZ –S04
Stainless Steel 1.4301, 304L	SPZ –V04
Stainless Steel 1.4401, 316L	SPZ –W04



- No flushing necessary
- Certified Ex e enclosure
- Different power dissipation
- Easy operation without programming
- Mounting is done on customer side
- Option with Safety glass or HMI

Description:

QUINTEX offers the enclosure series SPZ in different sizes and designs. All systems are available for the use in hazardous area (Zone 1/21 and Zone 2/22) in the protection type overpressure. The enclosure series SPZ allowed the customer to bring his non ex-components directly in the hazardous area. The enclosures are certified and ready to use immediately after installation. By connecting the power supply and the necessary pressure, both find in the accompanying documentation, the system starts automatically. The elimination of flushing time and the use of flushing gas make's the operation particularly economical. The QUINGUARD® control unit works without a flushing phase and starts after free measurement with the stationary gas detector in zone 1 automatically. In zone 2 applications it measure free by handheld gas detector and give an alarm when the pressure felt under the level.



Possible Application

- Enclosure with HMI's
- Analyzer
- Fill-up system
- Dosing system
- Painting system
- Temperature control units

Technical Data:

Dimension (mm):	800*1200*400mm
IP rate:	IP 66
Power dissipation:	465 Watt
Switching capacity:	max. 5 A (without Contactor SC)

Certificates

ATEX, GOST TC-RU

Marking

Pressure controller QUINGUARD® in the SPZ enclosure series:

Ex II 2G / II D

Power supply:

DC 24 Volts
 AC 115 Volts 50/60 Hz
 AC 230 Volts 50/60 Hz

Order number:

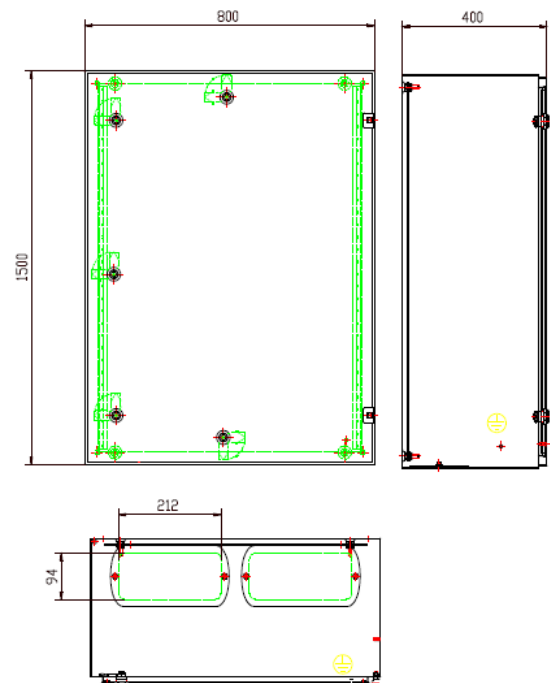
Mild steel painted RAL 7035	SPZ -S05
Stainless Steel 1.4301, 304L	SPZ -V05
Stainless Steel 1.4401, 316L	SPZ -W05



- No flushing necessary
- Certified Ex e enclosure
- Different power dissipation
- Easy operation without programming
- Mounting is done on customer side
- Option with Safety glass or HMI

Description:

QUINTEX offers the enclosure series SPZ in different sizes and designs. All systems are available for the use in hazardous area (Zone 1/21 and Zone 2/22) in the protection type overpressure. The enclosure series SPZ allowed the customer to bring his non ex-components directly in the hazardous area. The enclosures are certified and ready to use immediately after installation. By connecting the power supply and the necessary pressure, both find in the accompanying documentation, the system starts automatically. The elimination of flushing time and the use of flushing gas make's the operation particularly economical. The QUINGUARD® control unit works without a flushing phase and starts after free measurement with the stationary gas detector in zone 1 automatically. In zone 2 applications it measure free by handheld gas detector and give an alarm when the pressure felt under the level..



Possible Application

- Enclosure with HMI's
- Analyzer
- Fill-up system
- Dosing system
- Painting system
- Temperature control units

Technical Data:

Dimension (mm):	800*1500*400mm
IP rate:	IP 66
Power dissipation:	545 Watt
Switching capacity:	max. 5 A (without Contactor SC)

Certificates

ATEX, GOST TC-RU

Marking

Pressure controller QUINGUARD® in the SPZ enclosure series:

Ex II 2G / II D

Power supply:

DC 24 Volts
 AC 115 Volts 50/60 Hz
 AC 230 Volts 50/60 Hz

Order number:

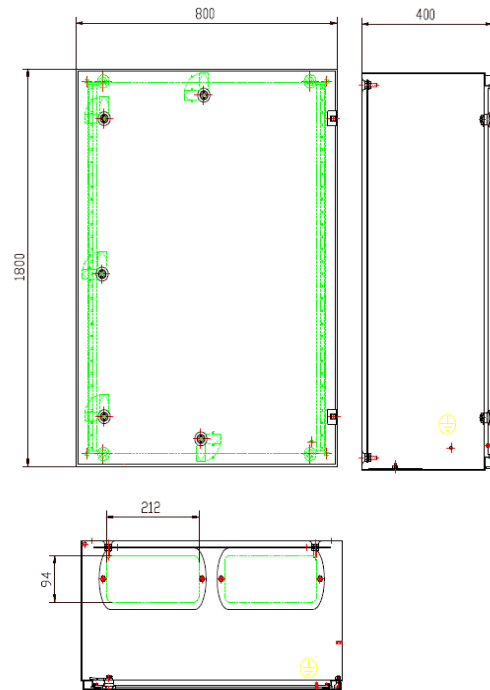
Mild steel painted RAL 7035	SPZ –S06
Stainless Steel 1.4301, 304L	SPZ –V06
Stainless Steel 1.4401, 316L	SPZ –W06



- No flushing necessary
- Certified Ex e enclosure
- Different power dissipation
- Easy operation without programming
- Mounting is done on customer side
- Option with Safety glass or HMI

Description:

QUINTEX offers the enclosure series SPZ in different sizes and designs. All systems are available for the use in hazardous area (Zone 1/21 and Zone 2/22) in the protection type overpressure. The enclosure series SPZ allowed the customer to bring his non ex-components directly in the hazardous area. The enclosures are certified and ready to use immediately after installation. By connecting the power supply and the necessary pressure, both find in the accompanying documentation, the system starts automatically. The elimination of flushing time and the use of flushing gas make's the operation particularly economical. The QUINGUARD® control unit works without a flushing phase and starts after free measurement with the stationary gas detector in zone 1 automatically. In zone 2 applications it measure free by handheld gas detector and give an alarm when the pressure felt under the level.



Possible Application

- Enclosure with HMI's
- Analyzer
- Fill-up system
- Dosing system
- Painting system
- Temperature control units

Technical Data:

Dimension (mm):	800*1800*400mm
IP rate:	IP 66
Power dissipation:	634 Watt
Switching capacity:	max. 5 A (without Contactor SC)

Certificates

ATEX, GOST TC-RU

Marking

Pressure controller QUINGUARD® in the SPZ enclosure series:

Ex II 2G / II D

Power supply:

DC 24 Volts
 AC 115 Volts 50/60 Hz
 AC 230 Volts 50/60 Hz

Order number:

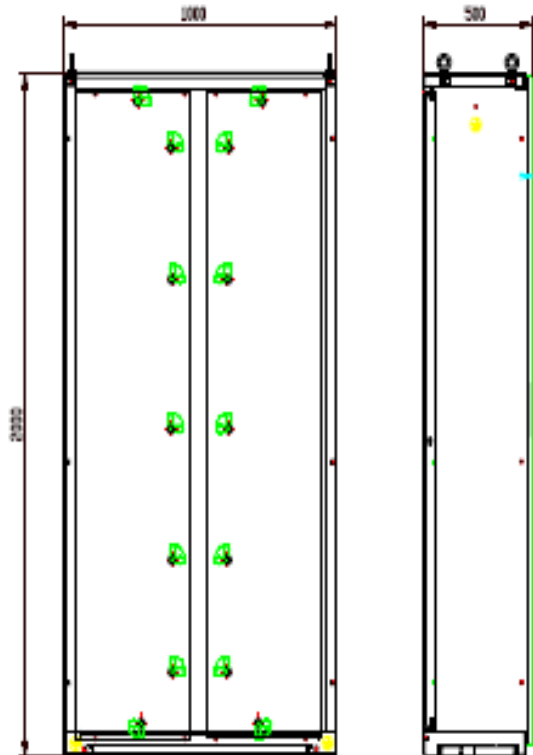
Mild steel painted RAL 7035	SPZ -S07
Stainless Steel 1.4301, 304L	SPZ -V07
Stainless Steel 1.4401, 316L	SPZ -W07



- No flushing necessary
- Certified Ex e enclosure
- Different power dissipation
- Easy operation without programming
- Mounting is done on customer side
- Option with Safety glass or HMI

Description:

QUINTEX offers the enclosure series SPZ in different sizes and designs. All systems are available for the use in hazardous area (Zone 1/21 and Zone 2/22) in the protection type overpressure. The enclosure series SPZ allowed the customer to bring his non ex-components directly in the hazardous area. The enclosures are certified and ready to use immediately after installation. By connecting the power supply and the necessary pressure, both find in the accompanying documentation, the system starts automatically. The elimination of flushing time and the use of flushing gas make's the operation particularly economical. The QUINGUARD® control unit works without a flushing phase and starts after free measurement with the stationary gas detector in zone 1 automatically. In zone 2 applications it measure free by handheld gas detector and give an alarm when the pressure felt under the level..



Possible Application

- Enclosure with HMI's
- Analyzer
- Fill-up system
- Dosing system
- Painting system
- Temperature control units

Technical Data:

Dimension (mm):	1000*2000*500
IP rate:	IP 66
Power dissipation:	898 Watt
Switching capacity:	max. 5 A (without Contactor SC)

Certificates

ATEX, GOST TC-RU

Marking

Pressure controller QUINGUARD® in the SPZ enclosure series:

Ex II 2G / II D

Power supply:

DC 24 Volts
 AC 115 Volts 50/60 Hz
 AC 230 Volts 50/60 Hz

Order number:

Mild steel painted RAL 7035	SPZ –S08
Stainless Steel 1.4301, 304L	SPZ –V08
Stainless Steel 1.4401, 316L	SPZ –W08



- No flushing necessary
- Certified Ex e enclosure
- Different power dissipation
- Easy operation without programming
- Mounting is done on customer side
- Option with Safety glass or HMI

Description:

QUINTEX offers the enclosure series SPZ in different sizes and designs. All systems are available for the use in hazardous area (Zone 1/21 and Zone 2/22) in the protection type overpressure. The enclosure series SPZ allowed the customer to bring his non ex-components directly in the hazardous area. The enclosures are certified and ready to use immediately after installation. By connecting the power supply and the necessary pressure, both find in the accompanying documentation, the system starts automatically. The elimination of flushing time and the use of flushing gas make's the operation particularly economical. The QUINGUARD® control unit works without a flushing phase and starts after free measurement with the stationary gas detector in zone 1 automatically. In zone 2 applications it measure free by handheld gas detector and give an alarm when the pressure felt under the level.



Possible Application

- Enclosure with HMI's
- Analyzer
- Fill-up system
- Dosing system
- Painting system
- Temperature control units

Technical Data:

Dimension (mm):	1200*2000*500
IP rate:	IP 66
Power dissipation:	1028 Watt
Switching capacity:	max. 5 A (without Contactor SC)

Certificates

ATEX, GOST TC-RU

Marking

Pressure controller QUINGUARD® in the SPZ enclosure series:

Ex II 2G / II D

Power supply:

DC 24 Volts
AC 115 Volts 50/60 Hz
AC 230 Volts 50/60 Hz

Order number:

Mild steel painted RAL 7035	SPZ -S09
Stainless Steel 1.4301, 304L	SPZ -V09
Stainless Steel 1.4401, 316L	SPZ -W09